



This Certificate issued under the seal of the Copyright Office in accordance with title 17, *United States Code*, attests that registration has been made for the work identified below. The information on this certificate has been made a part of the Copyright Office records.

*Karen Leigh Clayett*

Acting United States Register of Copyrights and Director

Registration Number

**VA 2-093-290**

Effective Date of Registration:

February 05, 2018

**Title**

Title of Work: Split-End Manual

**Completion/Publication**

Year of Completion: 2013

Date of 1st Publication: April 01, 2014

Nation of 1<sup>st</sup> Publication: United States

**Author**

- **Author:** Victor Talavera  
**Author Created:** Text, photographs, and compilation of photographs  
**Work made for hire:** No  
**Citizen of:** United States
- **Author:** Eileen Peona  
**Author Created:** photographs  
**Work made for hire:** No  
**Citizen of:** United States

**Copyright Claimant**

**Copyright Claimant:** Talavera Hair Products, Inc.  
2710 Alpine Blvd., Suite O-136, Alpine, CA, 91901, United States

**Transfer statement:** By written agreement

**Limitation of copyright claim**

**Material excluded from this claim:** licensed photographs

**New material included in claim:** Text, photographs, and compilation of photographs

**Rights and Permissions**

**Organization Name:** Talavera Hair Products, Inc.

**Name:** Victor Talavera  
**Email:** legal@splitender.com  
**Address:** legal@splitender.com  
Alpine, CA 91901

**Certification**

---

**Name:** Karen Convery  
**Date:** February 01, 2018

---

**Correspondence:** Yes





# Split-Ender<sup>®</sup> PRO

CORDLESS SPLIT END TRIMMER

## INSTRUCTION MANUAL



**SNIPS THE ENDS, NOT THE LENGTH**



# TABLE OF CONTENTS

	Page
GETTING TO KNOW YOUR SPLIT-ENDER PRO .....	2
PARTS LIST .....	2-3
IMPORTANT SAFEGUARDS & WARNINGS .....	4
RECHARGEABLE BATTERY HANDLE DETACHMENT & INSTALLATION .....	5
SPACER INSTALLATION & PROPER USE .....	6
HAIR PREPARATION .....	7
BEGIN TREATMENT .....	8-10
QUICK HAIR CHAMBER CLEAN UP .....	11
BLADE REPLACEMENT .....	12
DISINFECT, CARE & MAINTENANCE .....	12-13
IMPORTANT NOTES & DISCLAIMER .....	14

SPLIT-ENDER® PRO CORDLESS SPLIT END TRIMMER  
Manufactured and Distributed by TALAVERA HAIR PRODUCTS, INC. Alpine, CA 91901

**[www.splitenderpro.com](http://www.splitenderpro.com)**

**LEGAL NOTICE:** The Split-Ender® was created by Victor C. Talavera and is protected by law under U.S. Patent # 5,884,402, U.S. Patent # 6,588,108, U.S. Patent # 7,040,021, Europe EP-Patent # 1,381,496, Canada Pat. # 2,444,497, Australia Pat. # 2002254637, China & Hong Kong Pat. # ZL 02 8 08380.6, Taiwan Pat. # 224 543. Other Worldwide Patents & Trademark Pending!  
Split-Ender®, Talavera™, Surgy-Trim™ System and STS™, Split-Ending The Hair™ are trademarks of Copyright © 2013 Talavera Hair Products, Inc. All rights reserved. Made in China



# GETTING TO KNOW YOUR SPLIT-ENDER PRO



## PARTS LIST

Your Split-Ender PRO also comes with:



- **Carrying Bag** to safely transport your Split-Ender PRO and accessories everywhere your job takes you.



- **Styling Comb:** This Styling Comb is great for detangling your clients hair before treatment.
- Also use the forked end to section your clients hair right before using your Split-Ender PRO.



- **2 Sectioning Clips:** Use Sectioning Clips to keep away the untreated hair from the already treated hair sections.



- **Cleaning Brush:** Use Cleaning Brush to clean the hair off the blades and the housing.



- **1/8" Trim Spacer:** The 1/8" Trim Spacer will trim approximately 1/8" of the end of the hair and less amount of hair.
- **1/4" Trim Spacer:** The 1/4" Trim Spacer will trim approximately 1/4" of the end of the hair and a more amount of hairs than the 1/8" Trim Spacer.



- **Power Adaptor:** 110 Volt Power Supply



- **Miracle Silk:** The Ultimate Hair Salon Restoration Treatment. Apply a capsule of Miracle Silk directly onto hair after each treatment to nourishes the hair, to provide and regulate moisture, rejuvenate damaged hair, regene-rate elasticity, and restore the hair while leaving it soft and silky. Fight split ends, dry and frizzy hair! Made with Natural Ingredients. Alcohol Free. If you are a professional hair styler, register and **become an Authorized Dealer at [www.splitenderpro.com](http://www.splitenderpro.com)**.



# IMPORTANT SAFEGUARDS & WARNINGS

- **YOU MUST READ ALL INSTRUCTIONS BEFORE USING THE SPLIT-ENDER PRO.**
- Use this product only for its intended use as described in this manual.
- This device should NOT be used by children. Keep this product out of the reach of children.
- AVOID contact with moving parts.
- Always operate with clear window cover in place. **Blades will STOP operating if Clear Window Cover is removed or NOT installed.**
- This device is intended to be use only to remove split ends and damaged hair ends from the ends of the hair shaft while preserving the length.
- This device is NOT intended for daily brushing.
- AVOID water contact to the complete unit to prevent motor, battery and internal parts damage.
- **DO NOT DROP** as it will caused damages or breakage to the unit. Breakage to the unit are not cover under regular warranty. Breakage to the unit are the sole responsibility of the buyer.
- Talavera Hair Products, Inc. is not responsible for any misused, breakage or mishandling of this product by buyer or anyone thereafter which may cause damages to the Split-Ender PRO.
- Keep your Split-Ender PRO always clean and disinfected after every used.
- The Split-Ender PRO is a high end tool made for sole operation of a professional hair stylist and it most be handle with proper care.





# RECHARGEABLE BATTERY HANDLE DETACHMENT & INSTALLATION

1- Hold the Split-Ender PRO with one hand at the middle section of the main unit while holding the Battery Handle with the other just as shown on Fig. 1.



Fig. 1

2- Now rotate and twist gently the Battery Handle to the left until you feel a snap. That is the feel of the Battery Handle unlocking. (See Fig. 2)



Fig. 2

3- Pull the Battery Handle away from the main unit. Is that simple! (See Fig. 3)



Fig. 3

4- You can see now the Battery and Main Unit contacts. (See Fig. 4)



Fig. 4

**BATTERY HANDLE INSTALLATION:** To Install the Battery Handle back in to the main unit just repeat the same steps backward.



# SPACER INSTALLATION & PROPER USE

1- Select the Spacer to be used according to the hair length you are intending to Trim. In this case we have selected the 1/4" TRIM Spacer. Make sure that when installing into the Sliding Channels the Spacer is with the 1/4" TRIM writing straight and not up side down. (See Fig. 1)



Fig. 1

2- Holding the Split-Ender Up-Side Down, Spread the Spacer Ears a bit until it fit perfectly into the Front Housing Sliding Channels found under the blades and in both sides between the Hair Brushes area connecting together perfectly. These Channels are designed to slide the Spacer evenly in both side into the Front Housing. (See Fig. 2)



Fig. 2

3- Insert and Slide the Spacer into the Front Housing Side Channels and all the way to the end of the Front Housing. It should enter nice and easy without any effort. (See Fig. 3 and 4)



Fig. 3

**We have provided you with 2 Spacers.**

**1/8" TRIM Spacer:** The 1/8" Trim Spacer will trim approximately 1/8" of the end of the hair and less amount of hair.

**1/4" TRIM Spacer:** The 1/4" Trim Spacer will trim approximately 1/4" of the end of the hair and a more amount of hairs than the 1/8" Trim Spacer.

**WARNING! DO NOT USE THE SPLIT-ENDER PRO WITHOUT SPACERS!**



Fig. 4



# HAIR PREPARATION

1- Wash the hair to remove any oils and product solution that may be on it. Then completely blow dry the hair thoroughly before using your Split-Ender PRO.

**IMPORTANT:** THE SPLIT-ENDER PRO WILL ONLY WORK IN CLEAN AND FULLY DRY HAIR.

**WARNING!** Hair must be FREE from natural oils, hair spray, gels, mouse or any styling products on the hair as it will cause the hair to stick together and it will cause to be unevenly trimmed. Always Clean and fully dry the hair before using the Split-Ender PRO. The concept here is, that a clean and fully dry hair allows each hair strand to move freely and INDIVIDUALLY from one another in order to enter into the blades in a straight motion and be individually trimmed at the very ends.

The Split-Ender PRO is specially designed to only trim the very end of the hair strand which can only enter the blades. It trims from 1/8" of the ends alone by using the 1/8" TRIM Spacer and 1/4" by using the 1/4" TRIM Spacer. More info about the Spacers on section SPACER INSTALLATION & PROPER USE on page 6.

2- Comb hair completely free of tangles before using the Split-Ender PRO to avoid hair pulling. The Split-Ender PRO should run through your clients hair nice and easy.



WASH THE HAIR



BLOW DRY THE HAIR



COMB HAIR FREE OF TANGLE



3- Divide the hair in the middle in two half section. Clip away one half section from the back towards the front using one of the two Sectioning Clips provided, to keep it out of the way while treating the other side. Repeat it on the opposite side after finish treating the first half section. Now you are ready to begin treatment.



CLIP AWAY ONE SIDE

## BEGIN TREATMENT

**Step 1.** Select a small, "THIN" section of hair. Spread it to a "THIN" layer before placing it on top of the hair plate GUIDES and comb it "FREE OF TANGLES". This will allow the hairs to freely run through the hair plate and avoid getting pulled.

**Step 2.** Open the hair plate by sliding the Lock ON to the Lock OFF position located underneath the unit. (See Fig. 2)

**Step 3.** Select the ARROW pointing to the floor and press the button. A green light will turn ON letting you know that the unit is activated and ready to go. Hint! The motor will only turn ON when pressing the Pressing Handle. Remember, the Directional Switch is reversible, so as you switch from one hand to another, you also need to reverse the directional switch always with the ARROW pointing to the floor. (See Fig. 3)

**Step 4.** Place the "THIN" section of hair on top of the hair plate CENTER GUIDES (See Fig. 4), no wider than the width of the center guides & no thicker than the height of the center guides.

**Step 5.** Gently squeeze the hair plate Pressing

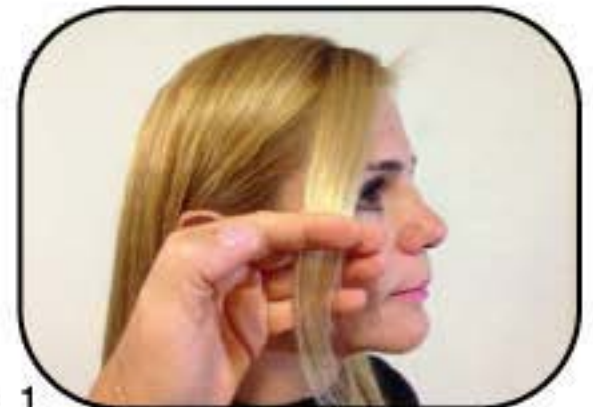


Fig. 1



Fig. 2



Fig. 3



Fig. 4



Handle until unit activates. Begin hair treatment procedure. Starting at the top while holding the section of hair with one hand and the Split-Ender PRO with the other, work towards the ends and slowly comb the hair with the Split-Ender PRO all the way to the bottom. Use a slow, even motion, just like you would use with a flat iron or hair brush. Repeat 3 times per section! (See Fig. 5)

**Note: If you feel that is pulling the hair then you either have too much hair on the hair plate or the hair is not free of tangles. Take some hair out, brush it and try again.**

**Step 6.** Treat every section of hair 3 times and continue with the same amount of treatments 3 times per section as you begin with, to insure an even trim all around the head of hair by the time that you are done. After you finish every section of hair, clip it to the side separating it from the untreated hair. (See Fig. 6) Select another small, "THIN" section of hair and repeat treatment until that working side is finished. Repeat in the other side until both sides are completed.

From time to time while you are treating the hair, you will see the Hair Chamber housing getting full of little bits of hairs. (See Fig. 7) Stop for a minute and empty the Hair Chamber pouring it over a sheet of paper or counter top as you go. (See Fig. 8) This insure that the blades housing is clean during treatment as you go for a better Split-Ender PRO performance. (Please go to "QUICK HAIR CHAMBER CLEAN UP" section for how to remove hair off the Hair Chamber safely).



Fig. 5



Fig. 6



Fig. 7



Fig. 8



It is a good time to show your client the little bits of hair being trimmed but more importantly... to let them feel a section of their new soft and silky treated hair. Let your client run it through their fingers and see their reaction. It should be a happy impressed reaction as you have removed the dead, dry ends and split ends from their hair while preserving the length. Making it instantly soft and silky. You also should feel the difference. It is impressive!

After you have completed the entire head of hair, comb it thoroughly and finished it with a capsule of our amazing Miracle Silk. The Ultimate Hair Salon Restoration Treatment. Pour half of a capsule first on the palm of your hands and spread it around. Then apply Miracle Silk to the hair evenly starting at the top and moving down to the ends. It may feel oily at first but the hair will absorb the Miracle Silk bringing back its natural shiny look and elasticity. Comb the hair again thoroughly and apply the rest of the Miracle Silk more towards the ends to seal and rejuvenate.

Now let your client enjoy their new soft, silky and healthy head of hair. From now on your clients can enjoy growing their hair Longer, reaching the desired length Faster, more Beautiful and Healthier than ever before. Thanks to your new service of Split-Ending™ their hair every 5 to 6 weeks with your new Split-Ender PRO.



## ***New!* Split-Ender® PRO STS™**

New Surgy-Trim™ System Technology safely trims the ends of the hair where damaged hair ends and split ends starts while preserving the beautiful, long, healthy hair, insuring that all the ends (split, damaged or dry) are trimmed and healthy.



# QUICK HAIR CHAMBER CLEAN UP

1- With the Hair Plate in the open position, hold by the Handle with one hand while gently pressing down on the Clear Window ARROW Mark just as shown on Fig. 1.



Fig. 1

2- Proceed to slide the Clear Window off the Hair Chamber or Blade Housing. (See Fig. 2)



Fig. 2

3- On a sheet of paper or counter top dump the hair pieces from the Hair Chamber! (See Fig. 3)



Fig. 3

4- Using the Cleaning Brush provided, brush out all of the hairs from the Blade and Housing. Note that the Cleaning Brush hairs may get stock on the blades sharp edges so do it carefully. (See Fig. 4) After you have finished, install the Clear Window back to the housing. Hint! Unit will not turn ON if clear window is not installed due to a internal safety switch!



Fig. 4



## BLADE REPLACEMENT

1- With the Hair Plate in the open position and the Clear Window removed, hold by the Motor Housing (Middle Section) with one hand while with the other hand hold the Blade Housing and gently open one side and then pull from each other until Blade Housing fully detached just as shown on Fig. 1 and 2.



Fig. 1

2- Now that you have detached the Blade Housing from the main unit (See Fig. 2), clean it, disinfect it and install it back together when finished. Apply a single drop of clipper oil (or 3-in-1 Oil) to each sides of the blades. Turn ON the unit for few seconds and now you can stored it. **IMPORTANT!** It is highly recommended to replace the Blade Housing every year to insure proper hair cutting and performance.



Fig. 2

## DISINFECT, CARE & MAINTENANCE

1- You must disinfect your Split-Ender PRO every time you use it. You can use Mar-V-Cide Spray Disinfectant. Follow their instructions. Base on normal procedures you should always clean all parts free of hair before you apply any disinfectant to them. Leave it on for at least 10 minutes before is ready to use again. (See Fig. 1)



Fig. 1



2- Reverse the Blade Housing and Spray Disinfectant to the entire Blade Housing, Brushes and Blade area. (See Fig. 2)



Fig. 2

3- Also apply Spray Disinfectant to the Hair Plate and Spacers. (See Fig. 3 and 4) Is always good to have a sanitized piece of cloth that you can use to clean any residue off from all parts after the 10 minutes of Disinfectant Solution time frame is over.



Fig. 3

4- You can also lay all parts that make contact with the hair down on a towel (after cleaning all hair off all parts) and Spray Disinfectant directly to each part if you don't want to have contact with the Spray Disinfectant solution on your hands. Never the less is always recommended to wash and disinfect your hands with soap and hand sanitizer to prevent passing any germs from your hands back to any parts or the Split-Ender PRO when assembling it back together.



Fig. 4

5- To extend the life of your cutting blades always keep it clean and follow the steps above.



Fig. 5



# IMPORTANT NOTES & DISCLAIMER

**1- Do not use the Split-Ender PRO in one specific section more than another,** since you may cause the hair to be trimmed unevenly. We recommend 3 treatment per section all the way around your clients head of hair. More treatments may be required base on client's hair damaged condition.

**2- Do not use the Split-Ender PRO without Spacers.** Too much hair can enter the blade all at once and it may cause damage to the hair. These blades are not designed to take a large amount of hair all at ones. It is recommended to use a small thin section of hair on the hair plate and always use the Spacer.

**3- Recommended hair maintenance treatment every 5 to 6 weeks.** However, if your client's hair is extremely damaged from numerous color treatments, hot styling tools, etc., earlier treatment may be necessary.

**4- HAIR PULLING:** If you feel you are "pulling" the hair, you may have too much hair on the hair plate. Simply remove the section of hair, comb free of tangle and try again with a smaller and thinner section of hair.

**5- Works best in straight or wavy hair.** If you have curly or freeze hair... you could properly straighten your client's hair before using the Split-Ender for best results. Different results may varied with different type of hair.

**6- Keep out of the reach of children.**

**DISCLAIMER:** Talavera Hair Products, Inc. and its employees, inventor, agents, dealers or distributors are not responsible in any way for any damages cause by any of our products if the products are used otherwise as intended and as stated in this Instruction Manual.

SPLIT-ENDER® PRO CORDLESS SPLIT END TRIMMER  
Manufactured and Distributed by TALAVERA HAIR PRODUCTS, INC. Alpine, CA 91901  
Made in China

**[www.splitenderpro.com](http://www.splitenderpro.com)**

**LEGAL NOTICE:** The Split-Ender® was created by Victor C. Talavera and is protected by law under U.S. Patent # 5,884,402, U.S. Patent # 6,588,108, U.S. Patent # 7,040,021, Europe EP-Patent # 1,381,496, Canada Pat. # 2,444,497, Australia Pat. # 2002254637, China & Hong Kong Pat. # ZL 02 8 08380.6, Taiwan Pat. # 224 543. Other Worldwide Patents & Trademark Pending!  
Split-Ender®, Talavera™, Surgi-Trim™ System and STS™, Split-Ending The Hair™ are trademarks of Talavera Hair Products, Inc.  
Copyright © 2013 Talavera Hair Products, Inc. All rights reserved.